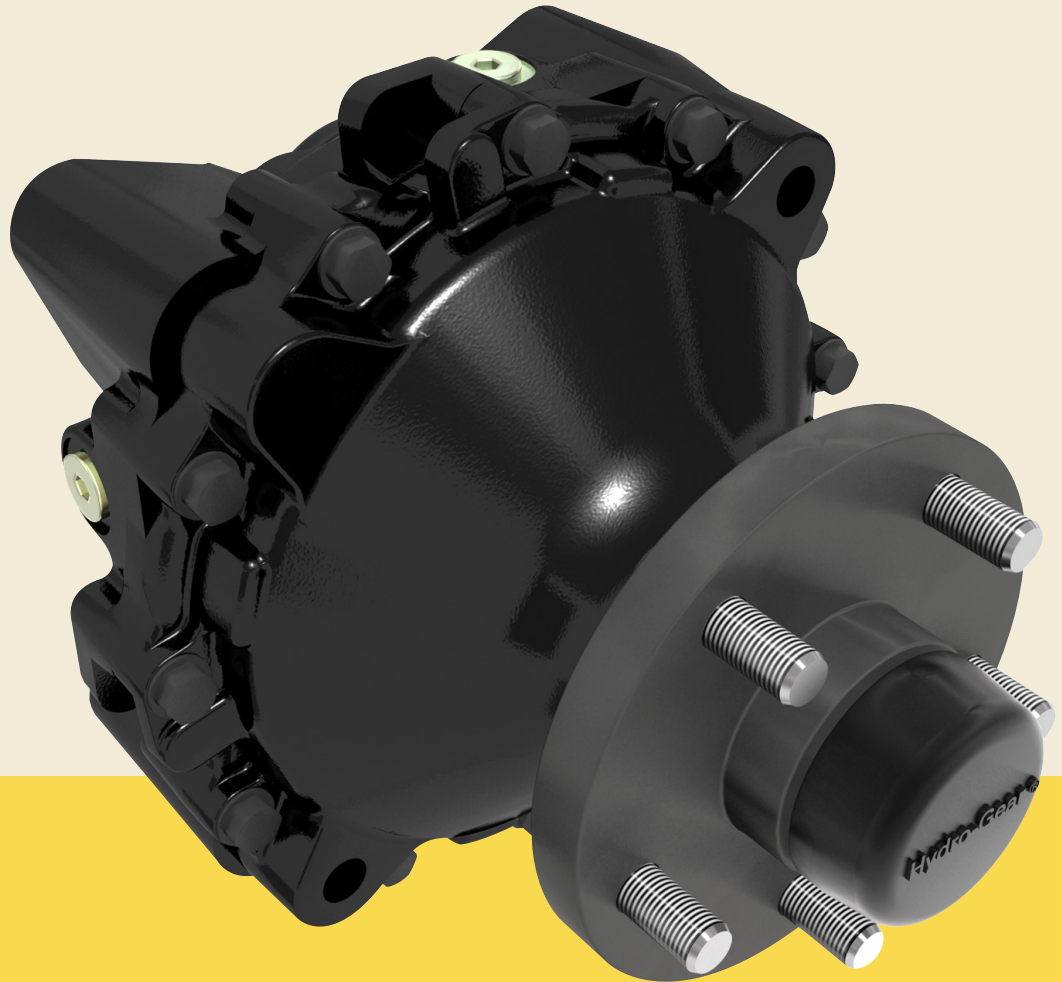


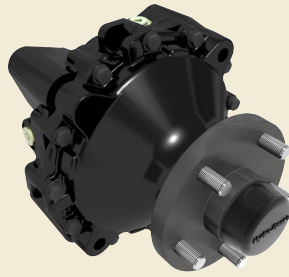
# **HGM-H™**

**LSHT PISTON MOTOR**



FORWARD MOTION THROUGH FORWARD THINKING®

**HYDRO-GEAR®**  
**COMMERCIAL**



Hydro-Gear<sup>®</sup> Commercial  
engineered drive system

Quiet and smooth  
performance

Large 1.375 inch axle shaft

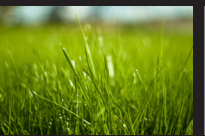
Two stage gear reduction  
(planetary final)

Up to 26 inch drive tires

Black paint

Maintenance free internal  
wet disc brake

Industry leading warranty  
and service support



SPECIFICATIONS		HGM-H	
Geometric Displacement	<i>in<sup>3</sup>/rev [cc/rev]</i>	15 [245.81]	18 [294.97]
Maximum Speed			
Continuous	<i>rpm</i>	210	185
Intermittent <sup>1)</sup>	<i>rpm</i>	250	210
Maximum Torque <sup>3)</sup>			
Continuous	<i>in-lbf [Nm]</i>	2700 [30]	3200 [36]
Intermittent <sup>1)</sup>	<i>in-lbf [Nm]</i>	4900 [55]	5900 [64]
Peak <sup>2)</sup>	<i>in-lbf [Nm]</i>	6600 [75]	7900 [89]
Maximum Output			
Continuous	<i>hp [kW]</i>	9.4 [7]	
Intermittent <sup>1)</sup>	<i>hp [kW]</i>	20.5 [15.4]	
Maximum Pressure Drop			
Continuous	<i>psi [bar]</i>	1650 [114]	
Intermittent <sup>1)</sup>	<i>psi [bar]</i>	3000 [207]	
Peak <sup>2)</sup>	<i>psi [bar]</i>	4000 [275]	
Maximum Oil Flow			
Continuous	<i>gpm [l/min]</i>	14.9 [56.4]	
Intermittent <sup>1)</sup>	<i>gpm [l/min]</i>	16.5 [62.4]	
Maximum Starting Pressure (with unloaded shaft)	<i>psi [bar]</i>	500 [34.5]	
Minimum Continuous Speed	<i>rpm</i>	3	
Axle Shaft Diameter	<i>in [mm]</i>	1.375 [34.925]	
Axle Shaft End Options	<i>Type:</i>	Tapered 4-Bolt Flange 5-Bolt Flange	
Parking Brake Type		Internal Wet Disc Brake	
Max. Brake Holding Torque	<i>in-lbf [Nm]</i>	6300 [711]	
Weight of Unit	<i>lb [kg]</i>	38.2 [17.3]	

1) Intermittent operation; the permissible values may occur for max. 5% of every minute.

2) Peak load: the permissible values may occur for max. < .25% of every minute.

3) 70 SUS oil at 210°F at 15 gpm and 1000 psi and 10 gpm at 3000 psi.

Specifications subject to change  
without notice.

BLN-0049\_P1  
10/2010



A World Leader in Hydrostatic Transaxles \* Axial Piston Pumps & Motors \* LSHT Wheel Motors \* Electric L&G Systems  
1411 South Hamilton Street \* Sullivan, IL 61951 \* Phone (217) 728-2581 \* Fax (217) 728-7665 \* www.hydro-gear.com